

Postal Code 78753

Residential Statistics



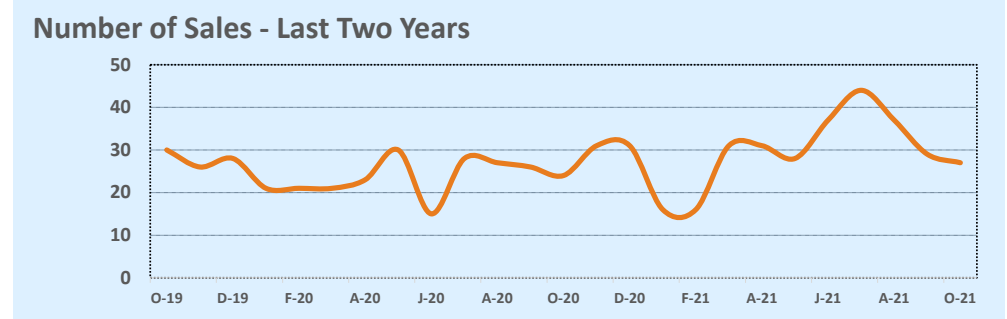
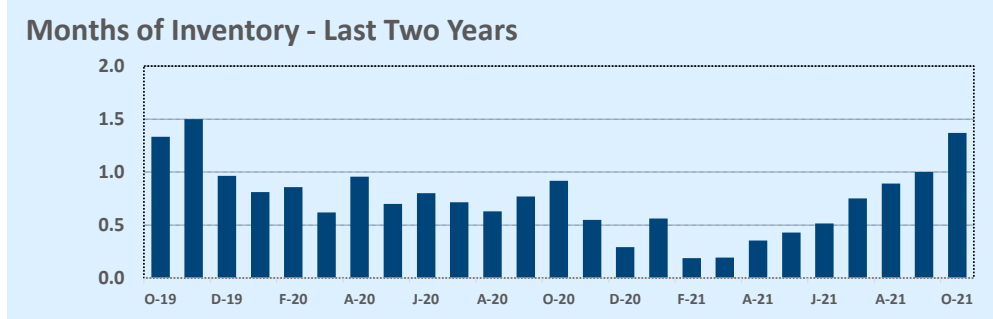
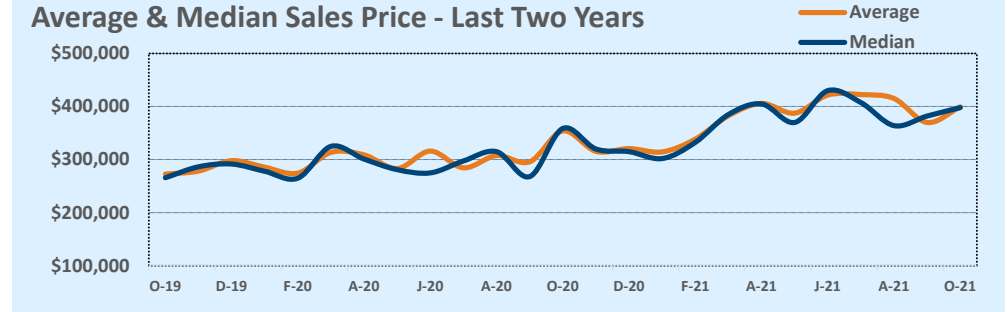
October 2021

Listings	This Month			Year-to-Date		
	Oct 2021	Oct 2020	Change	2021	2020	Change
Single Family Sales	20	23	-13.0%	231	200	+15.5%
Condo/TH Sales	7	1	+600.0%	65	36	+80.6%
Total Sales	27	24	+12.5%	296	236	+25.4%
New Homes Only	--	--	--	3	2	+50.0%
Resale Only	27	24	+12.5%	293	234	+25.2%
Sales Volume	\$10,785,511	\$8,499,221	+26.9%	\$116,815,172	\$71,157,605	+64.2%
New Listings	29	34	-14.7%	361	268	+34.7%
Pending	--	--	--	--	--	--
Withdrawn	3	--	--	8	3	+166.7%
Expired	3	--	--	8	3	+166.7%
Months of Inventory	1.4	0.9	+49.5%	N/A	N/A	--

Price Range	This Month			Year-to-Date		
	New	Sales	DOM	New	Sales	DOM
\$149,999 or under	--	--	--	--	1	56
\$150,000- \$199,999	--	--	--	5	3	21
\$200,000- \$249,999	1	1	350	22	15	36
\$250,000- \$299,999	1	4	17	49	42	10
\$300,000- \$349,999	5	6	21	60	45	11
\$350,000- \$399,999	4	3	30	70	52	14
\$400,000- \$449,999	10	6	24	59	51	12
\$450,000- \$499,999	4	5	20	50	45	10
\$500,000- \$549,999	1	--	--	17	20	7
\$550,000- \$599,999	1	--	--	15	6	5
\$600,000- \$699,999	2	1	7	11	13	8
\$700,000- \$799,999	--	1	8	1	1	8
\$800,000- \$899,999	--	--	--	2	2	110
\$900,000- \$999,999	--	--	--	--	--	--
\$1M - \$1.99M	--	--	--	--	--	--
\$2M - \$2.99M	--	--	--	--	--	--
\$3M+	--	--	--	--	--	--
Totals	29	27	33	361	296	13

Average	This Month			Year-to-Date		
	Oct 2021	Oct 2020	Change	2021	2020	Change
List Price	\$401,252	\$352,474	+13.8%	\$369,515	\$302,683	+22.1%
List Price/SqFt	\$274	\$205	+33.4%	\$249	\$192	+29.8%
Sold Price	\$399,463	\$354,134	+12.8%	\$394,646	\$301,515	+30.9%
Sold Price/SqFt	\$273	\$207	+32.1%	\$266	\$191	+39.0%
Sold Price / Orig LP	100.8%	100.9%	-0.1%	107.6%	99.7%	+7.9%
Days on Market	33	18	+80.8%	13	21	-38.8%

Median	This Month			Year-to-Date		
	Oct 2021	Oct 2020	Change	2021	2020	Change
List Price	\$370,000	\$341,950	+8.2%	\$359,500	\$296,000	+21.5%
List Price/SqFt	\$272	\$202	+34.6%	\$242	\$195	+23.9%
Sold Price	\$398,000	\$358,750	+10.9%	\$389,500	\$297,500	+30.9%
Sold Price/SqFt	\$276	\$215	+28.6%	\$261	\$196	+33.2%
Sold Price / Orig LP	100.0%	100.0%	+0.0%	105.2%	100.0%	+5.2%
Days on Market	12	6	+100.0%	5	6	-16.7%



Based on information from the Austin Board of REALTORS® (alternatively, from ACTRIS). Neither the Board nor ACTRIS guarantees or is in any way responsible for its accuracy. The Austin Board of REALTORS®, ACTRIS and their affiliates provide the MLS and all content therein "AS IS" and without any warranty, express or implied. Data maintained by the Board or ACTRIS may not reflect all real estate activity in the market.